

Non-Discrimination/Harassment Training: Getting Started


Welcome to TBR

If you are registering for TBR Employee Training

You must self-register. To access a list of training courses, please visit: [External Registration](#)

For more information on using this self-registration system, please visit: http://idesign.tbr.edu/self_registration

Log in below to view your courses, explore tools and features, and customize your eLearning experience. Enjoy your visit with TBR!

<p>Username *</p> <input type="text"/>	
<p>Password *</p> <input type="password"/>	
<p><input type="button" value="Log In"/> Forgot your password?</p>	

On the next screen, please select 'I do not have a username and password'. Click 'Submit'.

NOTE: All previous accounts have been deactivated so you MUST create a new username and password.

Registration Form

Select one of the following options:

I have an existing username and password
 I do not have a username and password

Next, find the correct institution under the Course Offering Name column and click on the link.

Course Offering Code ▲	Course Offering Name	Course Offering Cost
HRTRAIN005_APSU	Respect in the Workplace - APSU	
HRTRAIN005_CHSCC	Respect in the Workplace - CHSCC	
HRTRAIN005_CLSCC	Respect in the Workplace - CLSCC	
HRTRAIN005_COSCC	Respect in the Workplace - COSCC	
HRTRAIN005_DSCC	Respect in the Workplace - DSCC	
HRTRAIN005_ETSU	Respect in the Workplace - ETSU	
HRTRAIN005_JSCC	Respect in the Workplace - JSCC	
HRTRAIN005_MSCC	Respect in the Workplace - MSCC	
HRTRAIN005_MTSU	Respect in the Workplace - MTSU	
HRTRAIN005_NESCC	Respect in the Workplace - NESCC	
HRTRAIN005_NSCC	Respect in the Workplace - NSCC	
HRTRAIN005_PSTCC	Respect in the Workplace - PSTCC	
HRTRAIN005_RSCC	Respect in the Workplace - RSCC	
HRTRAIN005_Southwest	Respect in the Workplace - Southwest	
HRTRAIN005_TBR_NEW	Respect in the Workplace - TBR	
HRTRAIN005_TSU	Respect in the Workplace - TSU	
HRTRAIN005_TTC_Athens	Respect in the Workplace - TTC, Athens	
HRTRAIN005_TTC_Chattanooga	Respect in the Workplace - TTC, Chattanooga	
HRTRAIN005_TTC_Covington	Respect in the Workplace - TTC, Covington	
HRTRAIN005_TTC_Crossville	Respect in the Workplace - TTC, Crossville	

A description screen will appear next. From this screen, click 'Register'.

Description

[Course Offering List](#) > **Course Offering Description**

Step 1: View Course Offering Information

Course Offering Name: Respect in the Workplace - APSU
Course Offering Code: HRTRAIN005_APSU
Description:

The next screen is the Registration Form. Fill-in the required fields **using your real name and institutional email address** and click 'Submit'.

NOTE: Accounts using false names/email addresses will be deleted.

Registration Form

[Course Offering List](#) > [Course Offering Description](#) > **Registration Form**

Step 2: Enter Registration Information

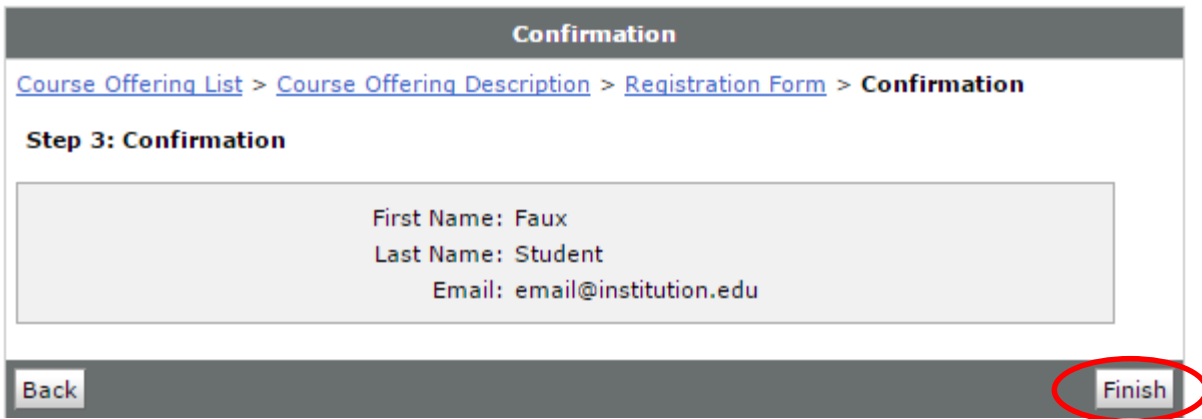
Required fields are marked with a *

* **First Name:**

* **Last Name:**

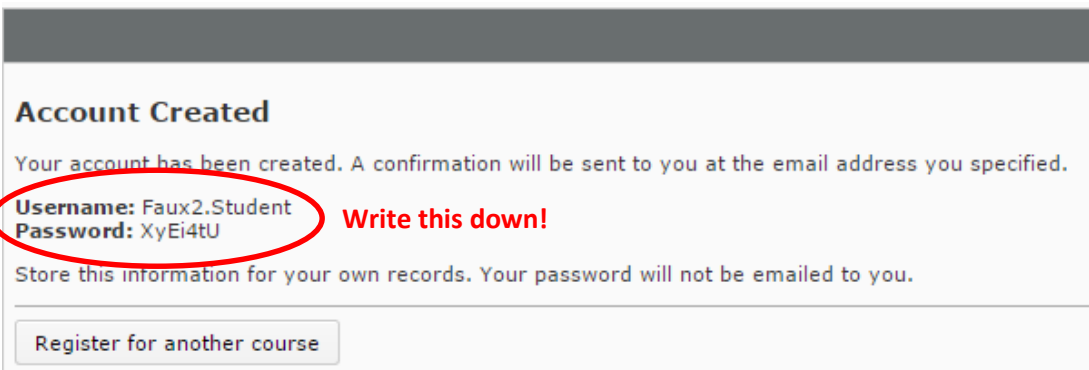
* **Email:**

You will receive a Confirmation screen. Ensure the information is accurate and click 'Finish'.

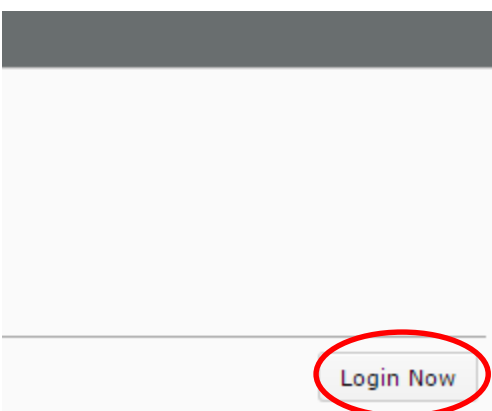


The next screen will display the Login credentials. Be sure to write down the Username and Password as they will be required on the following screen.

NOTE: The password IS case sensitive.



Select Login Now on the far right of the page.



The page will refresh and you will be taken back to the login page. Enter the credentials you just received and select Log In.

Welcome to TBR

If you are registering for TBR Employee Training

You must self-register. To access a list of training courses, please visit: [External Registration](#)

For more information on using this self-registration system, please visit: http://idesign.tbr.edu/self_registration


Log in below to view your courses, explore tools and features, and customize your eLearning experience. Enjoy your visit with TBR!

Your session has expired.

Username *

Password *

[Forgot your password?](#)



The next screen is the My Home page. In the My Courses widget, you will see the course that you have registered for. Select the link to access the course.

My Courses | ▾

[Non-Discrimination/Harassment Training \(Master Copy\)](#)

The course homepage will open. Read this page to become familiar with course expectations. In the Start Here box at the bottom of the page, click the link 'Non-Discrimination/Harassment Training'.

Start Here ▾ ✕



Begin the **Non-Discrimination/Harassment Training** now.


From this point forward, use the Back and Forward arrows located in the top right corner of the screen to navigate through the course.

Table of Contents > Getting Started > Navigation

Navigation ▾ 🔖 📄 ◀ ▶

How To Navigate Through The Course

Please use the Back  and Forward  navigation arrows located in the top and bottom right corners of the D2L screen to navigate through this online course.



After you have completed all the topics in this course you will have access to the **Assessment**.

Please select the forward arrow now.

Please contact your Human Resources Department with any questions.